

The background of the entire page is a soft-focus photograph of various colorful Easter eggs (pink, blue, yellow, green) and small flowers scattered on a light surface. A large, prominent red yarn ball with a blue and green center is positioned on the right side, partially overlapping the green banner.

MISTERY-KAL

Ostersause

DER BUNTE
MISTERY-KAL

Part 5

It goes on !

We have already reached the 5th part of the KAL. It is slowly coming to an end. I get enquiries that not so much wool has been used up yet and that "Mrs" is worried about having too much wool left over.

In my case, the 770 metres of Brause lasted right to the end of the shawl. There was only a little left over.

This could be the reason:

- You used a different wool and therefore a different wool consumption.
- You have used very thin needles and knit very tightly, in which case you have a lower wool consumption.

What to do:

The whole Chart has 189 rows. A pattern set has 22 rows. There are now 3 pattern sets of 22 rows and the edge with 31 rows to knit.

Now knit part 5. Before you start knitting, place the wool on a scale. Make a note of the weight. When you have finished knitting part 5, put the wool back on the scales. Now subtract the weight and the difference is the weight you needed for this pattern set.

You can now work out how much wool you still need. If there really is too much left, you can knit one of the patterns you have already used again. Caution: Please note that the scarf will be wider and increases will be made, this must be taken into account in the wool consumption.

Caution: If you really want to lengthen the scarf, knit this before the last pattern set, i.e. part 8. The pattern is designed to give a nice finish to the shawl. I would never add on after that 😊.

I hope I have been able to help you!

Jolanda Schneider

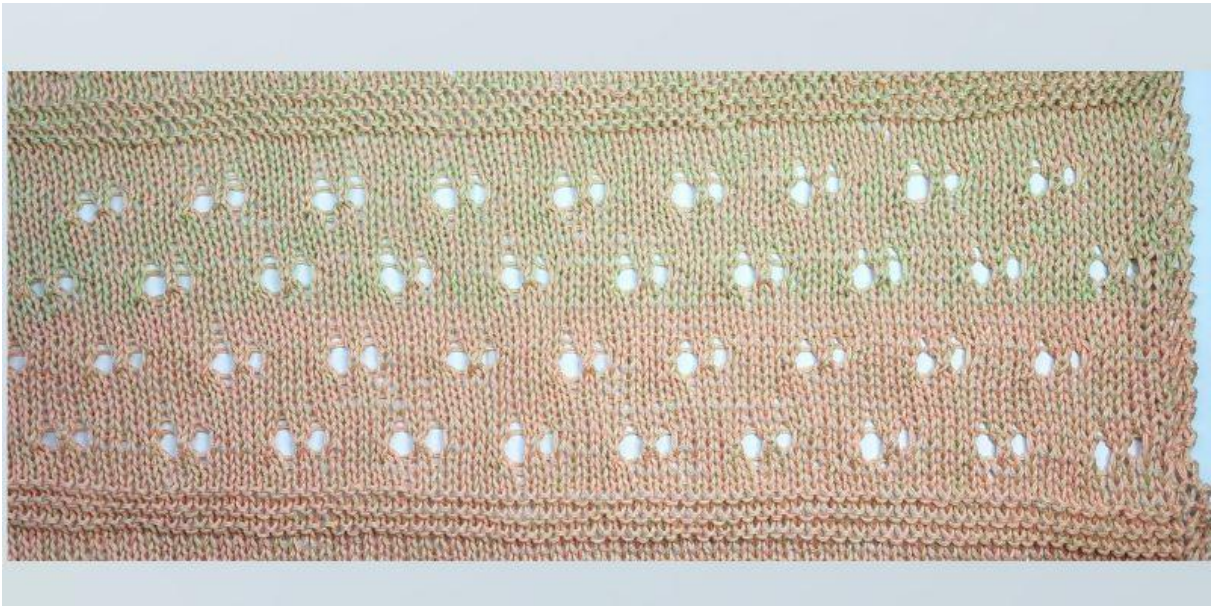


Knitting pattern




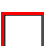

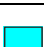
Continue with row 1, Chart part 5. The chart is knitted once.

The chart shows the rows as they are knitted on the front.

Knit the stitches on the back as described in the chart



Knitting Symbols

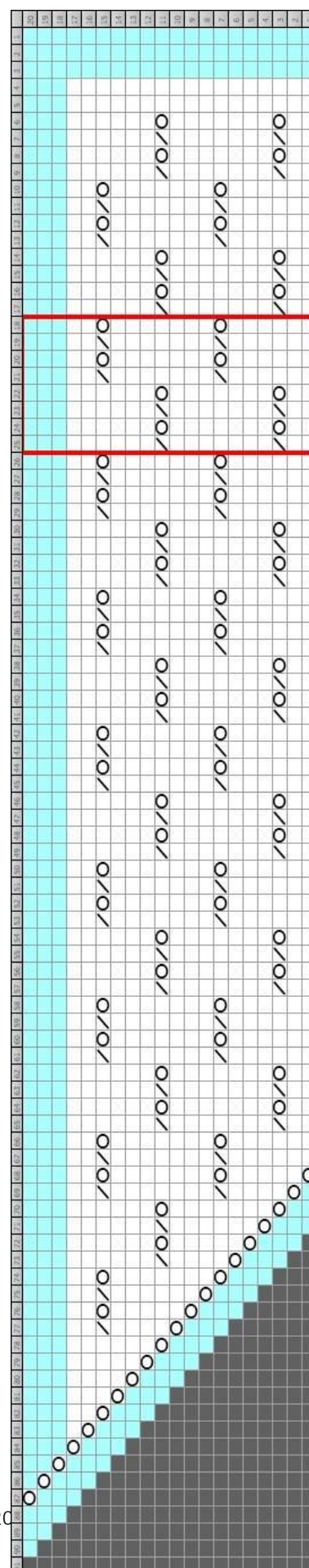
	k – knit frontside / purl wrongside
	yo - yarn over frontside / purl wrong side
	k2tog / knit 2 stitches together / purl wrong side
	red frame = to repeated stitches
	grey fields = no meaning
	k – knit frontside / knit wrongside

Part 5

← knitting direction

Partial view

Red frame → to repeated stitches



Jollyknits

Design and Copyright by Jolanda Schneider, 2018
www.jollyknits.com

Written pattern

[illegible]

row	15	k114, yo, k3
row	16	k115, yo, k3
row	17	k116, yo, k3
row	18	k117, yo, k3
ws-rows	18-20	k3, purl all follow stitches, k3
row	19	k118, yo, k3
row	20	k54, yo, k3

Terms

These instructions are subject to Swiss copyright law. Copyright instructions / Design by Jollyknits - Jolanda Schneider.

These knitting instructions are only to be used for private and personal use. It is prohibited to give away as a copy or pdf file to third parties. The instructions may also not be copied, reproduced or published.

Selling these knitting instructions, the text, images or graphics contained therein, as well as using the instructions for commercial purposes is prohibited.

Knitted models may be given away, but may not be reworked for commercial purposes that result in financial gain.

Commercial use

Are you the owner of a small wool store or a hobby knitter and would like to sell the knitted crochet or sewn items made from my patterns in your store or at markets?

My patterns are subject to copyright and therefore require a business license. I have prepared a perfect solution for you - my business license. With this license you have the permission to knit/crochet/sew according to my patterns and sell the garments in your store. It is also possible with a license to sell patterns in copied form.

Interested? You can find more information and the licenses on my website www.jollyknits.com or contact me personally. I am at your disposal.

Disclaimer of liability

All instructions are carefully prepared, checked and test knitted by us. However, we cannot accept any liability for deviating knitting results. Since every person knits differently, uses different knitting needle sizes or even knits this model with different yarns, we cannot accept any liability or guarantee.

Thank you for understanding.

Jollyknits