



MISTERY-KAL

# Ostersause

THE COLORFUL  
MISTERY-KAL

Part 4

## It goes on !

We are already at the 4th part of the KAL. You have already knitted half of your scarf 😊.

Every day I receive lovely messages and great photos from participants. It makes me incredibly happy to see how committed and creative you all are at KAL! Your progress is impressive and the variety of knitting projects makes the KAL a real pleasure.

Some of you have already set your own individual accents, be it through colour or special yarn combinations. It is fascinating to see how so many unique works of art are created from one knitting project.

## Not received the knitting pattern?

As I wrote in the last mail, you can find all parts of the KAL on the CMS page.

Your advantage is that you can always log in with the same web address. All parts are also available for those who start knitting later or can no longer find a part.

This link is active until the end of the KAL. After that we will deactivate it.

I ask you to download all your patterns until the end of the KAL !!!

Here is your link:

<https://www.jollyknits.com/de/content/21-ostersause-kal-2024>

I'm looking forward to the coming weeks and to seeing more great progress from you.

Keep up the good work and knit with heart and passion!

*Jolanda Schneider*

*Jollyknits*

## Knitting pattern

Continue with row 1, Chart part 4. The chart is knitted once.

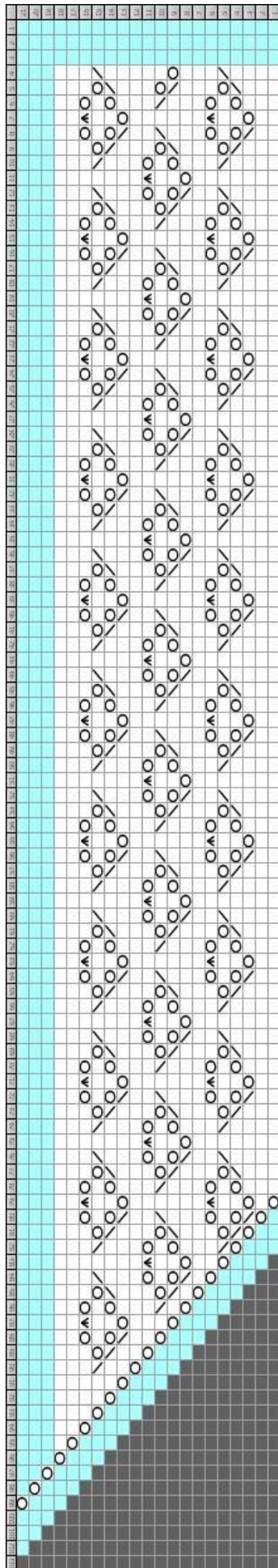
The chart shows the rows as they are knitted on the front.

Knit the stitches on the back as described in the chart.





## Part 4



← knitting direction

## Knitting symbol

	k – knit / <b>purl wrongside</b>
	<b>yo</b> – yarn over / <b>purl wrong side</b>
	s1, k1, pssso – <u>slip</u> one, knit one, pass slipped stitch over – <b>purl wrong side</b>
	k2tog / knit 2 stitches together / <b>purl wrong side</b>
	cdd, centered double decrease, slip two stitches if to knit, knit 1, pass slipped stitches over / <b>purl wrong side</b>
	grey fields = no meaning
	k – knit / <b>knit wrongside</b>

*Jollyknits*

## Written pattern

[illegible]

ws-rows	19 -21	knit all stitches
---------	--------	-------------------

## Terms

These instructions are subject to Swiss copyright law. Copyright instructions / Design by Jollyknits - Jolanda Schneider.

These knitting instructions are only to be used for private and personal use. It is prohibited to give away as a copy or pdf file to third parties. The instructions may also not be copied, reproduced or published.

Selling these knitting instructions, the text, images or graphics contained therein, as well as using the instructions for commercial purposes is prohibited.

Knitted models may be given away, but may not be reworked for commercial purposes that result in financial gain.

## Commercial use

Are you the owner of a small wool store or a hobby knitter and would like to sell the knitted crochet or sewn items made from my patterns in your store or at markets?

My patterns are subject to copyright and therefore require a business license. I have prepared a perfect solution for you - my business license. With this license you have the permission to knit/crochet/sew according to my patterns and sell the garments in your store. It is also possible with a license to sell patterns in copied form.

Interested? You can find more information and the licenses on my website [www.jollyknits.com](http://www.jollyknits.com) or contact me personally. I am at your disposal.

## Disclaimer of liability

All instructions are carefully prepared, checked and test knitted by us. However, we cannot accept any liability for deviating knitting results. Since every person knits differently, uses different knitting needle sizes or even knits this model with different yarns, we cannot accept any liability or guarantee.

Thank you for understanding.

*Jollyknits*