



MISTERY-KAL

Ostersause

THE COLORFUL
MISTERY-KAL

Part 2

All off to a good start!

Just a few hours after the 1st part was published, you were already showing impressive knitting patterns on social media. Your quick response and the high-quality results reflect not only your craftsmanship, but also your enthusiasm and dedication to the KAL 😊.

I'm delighted and it's great to receive so much feedback from you. I am honoured that I still receive daily enquiries from knitters who would like to take part in the KAL at a later date. This proves that there is a lot of interest in our joint project.

Knitting instructions not received ?

Unfortunately, some emails were not delivered during the last mailing. I would like to say a few words about this again.

I am DMARC certified ! This is an E-mail authentication programme that protects sender domains and improves the deliverability of mailings. DMARC is a prerequisite for the successful delivery of emails to many providers such as Gmail and Yahoo. My mails are therefore checked and should not be blocked or end up in spam. The registration was very expensive and I was hoping for a flawless service.

Nevertheless, mails are still being blocked or not arriving. There are probably other reasons for this. Mailboxes that are full, old computer systems, security settings on the mobile phone or computer set very high, etc. There are so many reasons that I unfortunately no longer have any influence over.

I therefore ask for your understanding if your patterns do not arrive immediately. It's not my fault and I haven't forgotten about you. I will be happy to send you the instructions by email if you let me know briefly 😊.

Best regards and now have fun with part 2 !

Jolanda Schneider

Jollyknits

Knitting pattern

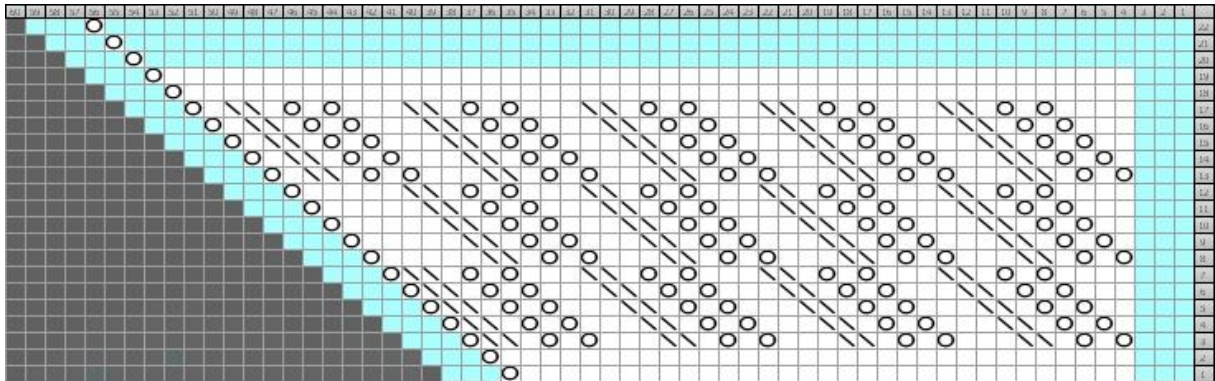
Continue with row 1, Chart part 2. The chart is knitted once.

The chart shows the rows as they are knitted on the front.






Knit the stitches on the back as described in the chart.



Part 2



Knitting symbol

-  k – knit / **purl wrongside**
-  yo - yarn over / **purl wrong side**
-  s1, k1, pssso - slip one, knit one, pass slipped stitch over - **purl wrong side**
-  grey fields = no meaning
-  k – knit / **knit wrongside**

Written pattern

row	1	k34, yo, k3
row	2	k35, yo, k3
row	3	k3, yo, k1, yo, k1, ssk2, k3, yo, k1, yo, k1, ssk2, k3, yo, k1, yo, k1, ssk2, k3, yo, k1, yo, k1, ssk2, yo, k3
row	4	k4, yo, k1, yo, k1, ssk2, k3, yo, k1, yo, k1, ssk2, k3, yo, k1, yo, k1, ssk2, k3, yo, k1, yo, k1, ssk2, yo, k3
row	5	k5, yo, k1, yo, k1, ssk2, k3, yo, k1, yo, k1, ssk2, k3, yo, k1, yo, k1, ssk2, k3, yo, k1, yo, k1, ssk2, yo, k3
row	6	k6, yo, k1, yo, k1, ssk2, k3, yo, k1, yo, k1, ssk2, k3, yo, k1, yo, k1, ssk2, k3, yo, k1, yo, k1, ssk2, yo, k3
row	7	k7, yo, k1, yo, k1, ssk2, k3, yo, k1, yo, k1, ssk2, k3, yo, k1, yo, k1, ssk2, k3, yo, k1, yo, k1, ssk2, yo, k3
row	8	k3, yo, k1, yo, k1, ssk2, k3, yo, k1, yo, k1, ssk2, k3, yo, k1, yo, k1, ssk2, k3, yo, k1, yo, k1, ssk2, k5, yo, k3
row	9	k4, yo, k1, yo, k1, ssk2, k3, yo, k1, yo, k1, ssk2, k3, yo, k1, yo, k1, ssk2, k3, yo, k1, yo, k1, ssk2, k5, yo, k3
row	10	k5, yo, k1, yo, k1, ssk2, k3, yo, k1, yo, k1, ssk2, k3, yo, k1, yo, k1, ssk2, k3, yo, k1, yo, k1, ssk2, k5, yo, k3
row	11	k6, yo, k1, yo, k1, ssk2, k3, yo, k1, yo, k1, ssk2, k3, yo, k1, yo, k1, ssk2, k3, yo, k1, yo, k1, ssk2, k5, yo, k3
row	12	k7, yo, k1, yo, k1, ssk2, k3, yo, k1, yo, k1, ssk2, k3, yo, k1, yo, k1, ssk2, k3, yo, k1, yo, k1, ssk2, k5, yo, k3
row	13	k3, yo, k1, yo, k1, ssk2, k3, yo, k1, yo, k1, ssk2, k3, yo, k1, yo, k1, ssk2, k3, yo, k1, yo, k1, ssk2, k1, yo, k3

row	14	k4, yo, k1, yo, k1, ssk2, k3, yo, k1, yo, k1, ssk2, k3, yo, k1, yo, k1, ssk2, k3, yo, k1, yo, k1, ssk2, k3, yo, k1, yo, k1, ssk2, k1, yo, k3
row	15	k5, yo, k1, yo, k1, ssk2, k3, yo, k1, yo, k1, ssk2, k3, yo, k1, yo, k1, ssk2, k3, yo, k1, yo, k1, ssk2, k3, yo, k1, yo, k1, ssk2, k1, yo, k3
row	16	k6, yo, k1, yo, k1, ssk2, k3, yo, k1, yo, k1, ssk2, k3, yo, k1, yo, k1, ssk2, k3, yo, k1, yo, k1, ssk2, k3, yo, k1, yo, k1, ssk2, k1, yo, k3
row	17	k7, yo, k1, yo, k1, ssk2, k3, yo, k1, yo, k1, ssk2, k3, yo, k1, yo, k1, ssk2, k3, yo, k1, yo, k1, ssk2, k3, yo, k1, yo, k1, ssk2, k1, yo, k3
row	18	k51, yo, k3
row	19	k52, yo, k3
ws-rows	1-19	k3, purl all follow stitches, k3
row	20	k53, yo, k3
row	21	k54, yo, k3
row	22	k55, yo, k3
ws-rows	20-22	knit all stitches

Terms

These instructions are subject to Swiss copyright law. Copyright instructions / Design by Jollyknits - Jolanda Schneider.

These knitting instructions are only to be used for private and personal use. It is prohibited to give away as a copy or pdf file to third parties. The instructions may also not be copied, reproduced or published.

Selling these knitting instructions, the text, images or graphics contained therein, as well as using the instructions for commercial purposes is prohibited.

Knitted models may be given away, but may not be reworked for commercial purposes that result in financial gain.

Commercial use

Are you the owner of a small wool store or a hobby knitter and would like to sell the knitted crochet or sewn items made from my patterns in your store or at markets?

My patterns are subject to copyright and therefore require a business license. I have prepared a perfect solution for you - my business license. With this license you have the permission to knit/crochet/sew according to my patterns and sell the garments in your store. It is also possible with a license to sell patterns in copied form.

Interested? You can find more information and the licenses on my website www.jollyknits.com or contact me personally. I am at your disposal.

Disclaimer of liability

All instructions are carefully prepared, checked and test knitted by us. However, we cannot accept any liability for deviating knitting results. Since every person knits differently, uses different knitting needle sizes or even knits this model with different yarns, we cannot accept any liability or guarantee.

Thank you for understanding.

Jollyknits