



MISTERY-KAL

# Ostersause

THE COLORFUL  
MISTERY-KAL

Part 1



# MATERIAL

## **Yarn**

Gradient Yarn

50% cotton / 50% acryl

4-ply, Yardage 770m = 200g

## **Quantity**

770m = 200g

## **Colour**

Brause

[www.100farbspiele.de](http://www.100farbspiele.de)

## **Gauge**

20 sts x 28 r = 10 x 10cm

## **Knitting needle**

Circular Knitting needle

Nr. 3.0 – 4.5mm

Length 80cm – 100cm





## Knitting pattern

|                                   |   |
|-----------------------------------|---|
| cast on                           | 6 stitches  |
| row 1<br>(wrong side)             | knit  |
| row 2<br>(right side)             | row 1 from (knit 3, yo, knit 3), row 1 from the Chart           |
| row 3 and all follow<br>back rows | knit 3, purl all follow stitches to the last 3 stitches, knit 3 |

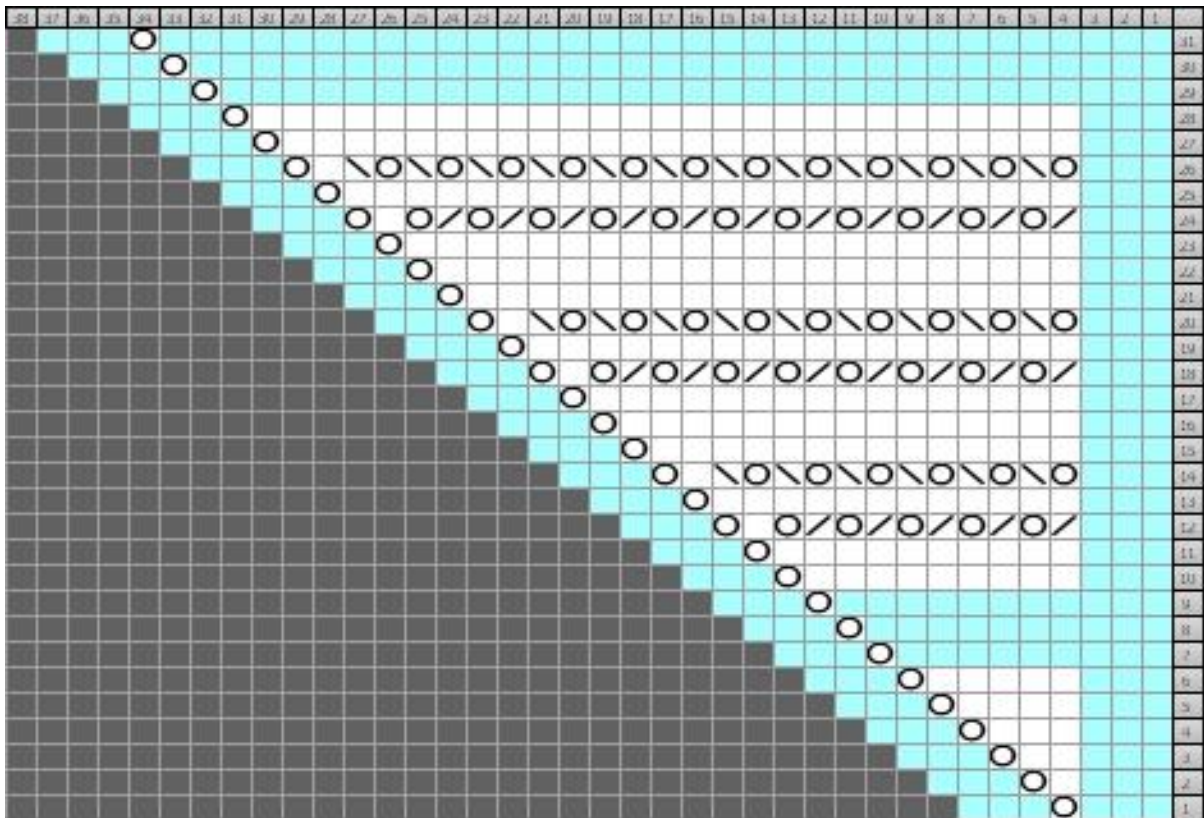
Continue with row 2 of chart part 1. The chart is knitted once.

The chart shows the rows as they are knitted on the front.






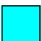
Knit the stitches on the back as described in the chart.



## Part 1



### Knitting symbol

-  k – knit / **purl wrongside**
-  yo - yarn over / **purl wrong side**
-  s1, k1, pss0 - slip one, knit one, pass slipped stitch over - **purl wrong side**
-  k2tog / knit 2 stitches together / **purl wrong side**
-  grey fields = no meaning
-  k – knit / **knit wrongside**

*Jollyknits*

Design and Copyright by Jolanda Schneider, 2024  
[www.jollyknits.com](http://www.jollyknits.com)

## Written pattern

|         |    |   |
|---------|----|---|
| cast on |    | 6 stitches  |
| ws-row  |    | knit all stitches   |
| row     | 1  | k3, yo, k3  |
| row     | 2  | k4, yo, k3  |
| row     | 3  | k5, yo, k3  |
| row     | 4  | k6, yo, k3  |
| row     | 5  | k7, yo, k3  |
| row     | 6  | k8, yo, k3  |
| row     | 7  | k9, yo, k3  |
| row     | 8  | k10, yo, k3   |
| row     | 9  | k11, yo, k3   |
| row     | 10 | k12, yo, k3   |
| row     | 11 | k13, yo, k3   |
| row     | 12 | k3, k2tog, yo, k2tog, yo, k2tog, yo, k2tog, yo, k2tog, yo, k1, yo, k3 |
| row     | 13 | k15, yo, k3   |
| row     | 14 | k3, yo, ssk, yo, ssk, yo, ssk, yo, ssk, yo, ssk, yo, ssk, k1, yo, k3  |
| row     | 15 | k17, yo, k3   |
| row     | 16 | k18, yo, k3   |
| row     | 17 | k19, yo, k3   |

|             |    |  |
|-------------|----|--|
| row         | 18 | k3, k2tog, yo, k2tog, yo, k2tog, yo, k2tog, yo, k2tog, yo, k2tog, yo, k2tog, yo, k2tog, yo, k1, yo, k3                       |
| row         | 19 | k21, yo, k3  |
| row         | 20 | k3, yo, ssk, yo, ssk, yo, ssk, yo, ssk, yo, ssk, yo, ssk, yo, ssk, yo, ssk, yo, ssk, k1, yo, k3                              |
| row         | 21 | k23, yo, k3  |
| row         | 22 | k24, yo, k3  |
| row         | 23 | k25, yo, k3  |
| row         | 24 | k3, k2tog, yo, k2tog, yo, k2tog, yo, k2tog, yo, k2tog, yo, k2tog, yo, k2tog, yo, k2tog, yo, k2tog, yo, k2tog, yo, k1, yo, k3 |
| row         | 25 | k27, yo, k3  |
| row         | 26 | k3, yo, ssk, yo, ssk, yo, ssk, yo, ssk, yo, ssk, yo, ssk, yo, ssk, yo, ssk, yo, ssk, yo, ssk, k1, yo, k3                     |
| row         | 27 | k29, yo, k3  |
| row         | 28 | k30, yo, k3  |
| row         | 29 | k31, yo, k3  |
| row         | 30 | k32, yo, k3  |
| row         | 31 | k33, yo, k3  |
| all ws-rows |    | k3, purl all follow stitches, k3   |

## How does the KAL work?

On 8 dates, a pattern piece that is still secret until then is published. This is knitted until the next date. The next pattern piece is then published on the following date. This is repeated 8 times until we are finished and have knitted a beautiful pattern mix lace scarf together.

## Knitting pattern

IMPORTANT: You received all the information about the KAL when you purchased the pattern. Did you read everything carefully? Very good 😊!

## Schedule

Part 1 - February 9, 2024

Part 2 - February 16, 2024

Part 3 - February 23, 2024

Part 4 - March 1, 2024

Part 5 - March 8, 2024

Part 6 - March 15, 2024

Part 7 - March 22, 2024

Part 8 - March 29, 2024 - End of Good Friday

If you have any further questions, please contact me by email [mail@jollyknits.com](mailto:mail@jollyknits.com) and not via social media.

If you have not received your instructions, a friendly email is enough and the instructions will be sent to you immediately 😊.

Now I wish you lots of fun with the KAL!

Sincerely

*Jolanda Schneider*

*Jollyknits*

Design and Copyright by Jolanda Schneider, 2024  
[www.jollyknits.com](http://www.jollyknits.com)

## Terms

These instructions are subject to Swiss copyright law. Copyright instructions / Design by Jollyknits - Jolanda Schneider.

These knitting instructions are only to be used for private and personal use. It is prohibited to give away as a copy or pdf file to third parties. The instructions may also not be copied, reproduced or published.

Selling these knitting instructions, the text, images or graphics contained therein, as well as using the instructions for commercial purposes is prohibited.

Knitted models may be given away, but may not be reworked for commercial purposes that result in financial gain.

## Commercial use

Are you the owner of a small wool store or a hobby knitter and would like to sell the knitted crochet or sewn items made from my patterns in your store or at markets?

My patterns are subject to copyright and therefore require a business license. I have prepared a perfect solution for you - my business license. With this license you have the permission to knit/crochet/sew according to my patterns and sell the garments in your store. It is also possible with a license to sell patterns in copied form.

Interested? You can find more information and the licenses on my website [www.jollyknits.com](http://www.jollyknits.com) or contact me personally. I am at your disposal.

## Disclaimer of liability

All instructions are carefully prepared, checked and test knitted by us. However, we cannot accept any liability for deviating knitting results. Since every person knits differently, uses different knitting needle sizes or even knits this model with different yarns, we cannot accept any liability or guarantee.

Thank you for understanding.

*Jollyknits*